



A Glance Back at 2022 - *A Year to be Grateful*

By Karla Nichols, Executive Director

As I reflect back on 2022, the first word that comes to my mind is grateful. Grateful, because of the way our community has rallied to support Cancer Action.

Grateful for the opportunity to serve others, ease their burdens and offer the support they need to help meet the many challenges cancer has brought to their lives. Grateful for the outstanding cancer care available in Kansas City and for our partnerships in providing exceptional care to cancer patients in our hometown. Grateful for a committed board of directors and dedicated staff who put heart as well as hard work into fulfilling our mission of reducing distress and improving the well-being throughout the cancer journey.

Indeed, there have been challenges. We still live in a very challenging and uncertain time. Our family, friends and neighbors living with cancer struggle with many challenges and live with uncertainty each day as well. I am reminded of how cancer can turn a person's world upside down. Those fighting cancer have unparalleled challenges during this historic time. Many cancer patients are facing financial, physical and emotional difficulties that are overwhelming.

Cancer Action has continued to stand in the gap. We are a critical support for cancer patients and



Sunflowers to Roses presented their largest donation to celebrate their 20th Anniversary, \$100,000 from their annual Bike Ride!

their families, offering much-needed financial assistance, practical services, emotional support and guidance to help them navigate these uncertain times. During past year we were able to expand our service delivery to include Cass County. We also added a Gas Card Program to help cancer patients with the high cost of gas while they are in treatment. This has been a huge help!

As a local organization, we are uniquely positioned to pivot resources and expand services that are needed right here in our hometown. We continue to look for ways to expand our support to meet more of the needs that are being experienced by cancer patients in our community. Taking care of our neighbors, friends and family members has been a priority for our organization for more than sixty years, and helping some of the most vulnerable cancer patients meet their many challenges is a driving force for us.

Cancer Action has had its own challenges as we continue to deal with the financial impact of this time.

We are so grateful for many who have stepped up during this difficult year to raise funds for Cancer Action. Many are long-time friends who continue to stand with us, and we had some new friends come alongside us this past year! We could not meet the critical needs of those with cancer without the support of individuals, groups and companies who are passionate about helping cancer patients. While much has changed, the "heart" of our organization remains the same, sustained by compassionate caring people who are passionate to make a difference!

2023 will continue to have many challenges for those facing a cancer diagnosis. With the support of our generous community, Cancer Action will continue to be a beacon of light and hope for those facing the challenges of cancer in the Kansas City area. With expanded services, we will offer more support throughout the community this coming year! Support throughout the cancer journey, is more than our tagline, it is our mission and our heartbeat. We are honored to be the place of help and hope for hundreds of our friends and neighbors on such a difficult life journey.

Serving Our Community... Cancer Action's Impact in 2022

A cancer diagnosis can be overwhelming for patients and their families. In 2022, cancer patients continued to face challenges from both COVID and economic conditions. Many struggled with the financial impact of cancer on top of meeting their basic living needs.

Cancer Action has continued to stand in the gap. We are a critical support for cancer patients, offering direct services, financial assistance, and emotional support. This past year we expanded our service area to include Cass County. We also added a Gas Card Assistance Program to help those in treatment with the high cost of travel. We continue to be there through every step of the cancer journey. *But we couldn't do it without the support of our community!* We want to share with you some of the impact we made together this past year...

- Supplied **25,000 servings of nutritional supplements** to more than 240 cancer patients to help maintain their weight and energy during cancer treatment
- Provided **55 gas cards** to help clients get to their life-saving treatment appointments
- Filled **294 prescriptions** for those who could not afford their medication to relieve pain, nausea, treat infections and meet other cancer supportive care needs
- Helped women going through treatment by providing **112 wigs and over 250 turbans and scarves**
- Issued **over 234 pieces of medical equipment** to help families members care for their loved ones
- Distributed **18,000 medical supplies** to support cancer patients and decrease the financial burden of cancer
- Our case managers provided emotional support, guidance and education to all of our clients and also helped hundreds who called requesting assistance from our community.

Throughout the year, we receive many notes and words of gratitude for our work. These notes belong to each person that makes it possible for us to lift others, and offer caring support during one of the most difficult times in their life. Let me share a little note from one of our grateful clients.

"Thank you!! Cancer Action is a silver lining in a dark cloud. I'm finding I'm being blessed along this journey, I'm very appreciative."

We ♥ our Volunteers



VOLUNTEERS MAKE A DIFFERENCE

Cancer Action is appreciative of the work and support of our many volunteers. Some of our volunteer groups have begun meeting again and are busy making comfort items for our clients. We visited our Gladstone volunteer group and presented them with a certificate of appreciation for the many years of faithful service to Cancer Action! Because of safety precautions, we still do not have any volunteers working in our offices. Know that we are thinking of each of you. We miss you and are so grateful for you! *We love our volunteers!*

Cancer Action Gladstone Service Group



Compassion in Action

Cancer Action has been blessed to have several groups and individuals that have supported us through some unique ways. We are so grateful for everyone who shares their time and talents to offer a helping hand to those with cancer in our community. Here are just a few examples...



Cancer Action Horseshoe Tournament Since 2002, a group who pitches horseshoes at the Don Harris Arena, has held an annual tournament for Cancer Action, raising over \$50,000 in the 21 years they have held the event!

IO Maiden Designs

These two wonderful women make jewelry and go to craft shows throughout Missouri to sell their beautiful handmade pieces. They have donated over \$25,000 the past 7 years!



McCurry's

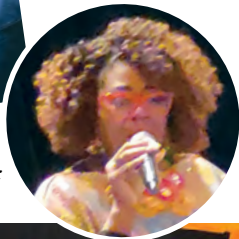
Kimbell McCurry is an artist. Every October he paints a picture a day (or two) and sells them on his Facebook page and donates proceeds to Cancer Action in honor of his wife, Linda who is a cancer survivor. They have donated over \$25,000 the past 10 years to Cancer Action!



Champions for Survivorship Breakfast a Success



Gary Doolittle, M.D., speaker, with Karla at the breakfast



Ebony Fondren, Jazz singer



Gary Lezak recognized for his 20 years of support to Cancer Action



Sunflowers to Roses recognized for their 20th Anniversary and support to Cancer Action

Financial Overview

Total Support and Revenues	\$ 666,887
Donations/Memorials Requests	\$ 383,010
Patient Services Grants	\$ 114,700
United Way/ CFC	\$ 11,461
Special Events	\$ 91,344
Program Service Income	\$ 1,165
In-Kind/Noncash Contributions	\$ 5,920
Real Gains (Losses) on Investments	\$ 27,600
Income from Perpetual Trust	\$ 6,156
Interest & Dividends on Investments	\$ 25,262
Interest Revenue	\$ 89
Operational Expenses	\$ 462,304
Programs and Services	\$ 337,062
Management/General	\$ 76,091
Fundraising	\$ 49,151

A full copy of the 2022 audited financial statements may be obtained upon request.

Life is about making an Impact, not making an income.

Kevin Kruse

Special thanks to the following for their support of Cancer Action:

Foundations and Businesses

Addington Design
 Bank of Labor
 Richard and Annette Bloch Family Foundation
 Bra Couture KC
 Aileen V. and Redman Callaway Fund
 Carstar, Blue Springs, MO
 Charities Foundation of America
 Christian Perspectives, Inc.
 Community America Credit Union
 Coram/CVS Speciality Infusion Services
 Creative Planning
 Cremation Society of Kansas and Missouri
 Dimensional Innovations Foundation
 Edward Jones
 Farmers Bank of Kansas City
 Faurecia
 First Federal Bank of Kansas City
 H8 Cancer Foundation
 Gary and Janet Hall Family Foundation
 Health Forward Foundation
 Heartland Combined Federal Campaign
 Homer McWilliams Oncology Fund
 Kansas City Medicine Cabinet
 Howard & Patricia A. Rogers Trust Fund
 Menorah Heritage Foundation
 Masonic Cancer Alliance
 Morgan Stanley
 Meyers Funeral Chapel
 Powell CVM Inc.
 Realm Construction
 Ride 2 Boulevardia
 RPM Photography and Cinematography
 Sara's Floral
 Sarah Cannon Cancer Institute
 at Centerpoint Medical Center

Sarah Cannon Cancer Institutes/
 HCA Midwest Health
 Sunflowers to Roses, Inc.
 The Benevity Community Impact Fund
 The Blackbaud Giving Fund
 Truman Heartland Community Foundation
 Truman Medical Center
 United Way of Greater Kansas City
 University Health
 University Of Kansas Health Sytems
 University of Kansas Medical Center,
 Division of Medical Oncology
 ViVi Fund
 Wendy Foil Team
 Zucca Daughters & Sons Roofing

Community Groups

Beoutify
 Brookridge Women's Golf Association
 Cars for Cancer KC
 Elkettes, Blue Springs, MO
 First Christian Church, Christian Women's
 Fellowship, Independence, MO
 First Presbyterian Church, Independence, MO
 Heartland Indoor Horseshoe Association
 Independence Young Matrons
 IO Maiden Designs
 Kimbell McCurry Paintings
 Maywood Community Church Ladies Council
 Merriam Christian Church
 Pay It Forward Nick's Way
 Poppy's Handmade Creations
 Tomahawk Hills Women's Golf Association
 Woods Chapel United Methodist Church

2022 Board Members

BOARD OFFICERS

BRIAN LEVINSON, President
 Community Volunteer
 ELAINE MCINTOSH, Vice-President
 Retired, CEO Kansas City Hospice
 & Palliative Care
 RHONDA CHERRY, Recording Secretary
 University of Kansas Cancer Center
 CLAYTON HARPER, Treasurer
 Creative Planning
 MELANIE SIMPSON, Past President
 University of Kansas Health Systems

BOARD MEMBERS

MATTHEW ALLIN - St. Luke's Health System
 ERICKA ANDERSON - American Academy
 of Family Physicians
 MOLLY BUCHANAN - Walker
 SAM BURNETT - Attorney/Financial Advisor
 CHRISTIE CAIN - HCA Midwest Health
 KIMBERLY GEORGE
 Kansas City Urology Care
 JANET HALL - Community Volunteer
 DAVID HARRIS - US Bank
 JO BETH HERRICK - Swope Health
 MARY LOU KEGLER - Minister
 ANITA MACON - University of Kansas
 Health System
 VANGIE RICH - Community Volunteer
 TINA SHROPSHIRE - University Health
 SUSAN STILES - Oracle Cerner
 SARAH TAYLOR, M.D. - University of Kansas
 Cancer Center

Mission Statement

Cancer Action is dedicated to reducing distress and promoting
 the well-being for those living with, through and beyond cancer
 in the Kansas City area.



Community Partner



MISSOURI OFFICE
 4010 S. Lynn Court
 Independence, MO 64055
 816-350-8881

KANSAS OFFICE
 10520 Barkley, Suite 100
 Overland Park, KS 66212
 913-642-8885

www.canceractionkc.org